

Maverick Standard

Stand Parts



Base, 2 telescopic poles, 1 top holding bracket and 2 thumb screws.

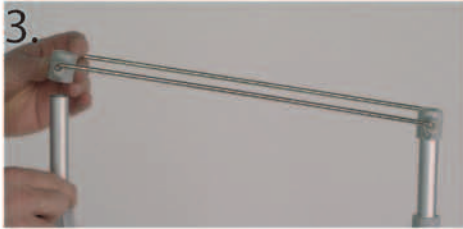


1.



2.

Attach telescopic poles to the base by sticking the threaded end of the pole through the holes on the base. Then use thumb screw to hold them on.



Slide the Top Holding Bracket over the top of the 2 telescopic poles



4.

Twist the top plastic hub to lock adjustable poles.

Revolving Unit Parts



Motorized Revolving Unit, Bottom weighted roller, Carry Bag and Transformer.

Graphic Install



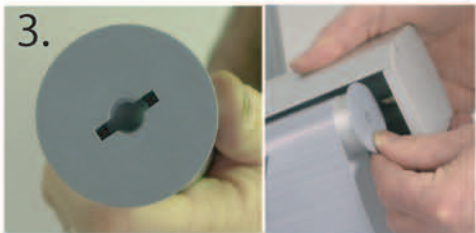
1.

Take Motorized Revolving unit and push on the inside roller against the retaining spring so the roller can be removed.



2.

Once the roller is removed from the Motorized Revolving Unit slide it inside of the graphic loop.



3.

Now reinstall the roller into the Motorized Revolving Unit by lining up the pin on the motor side to the slotted spring side of the roller. Then push to compress the spring enough to clear opposite side pin, line up to hole and release.



4.

Hang the unit with the graphic attached on the top holding bracket.



5.

Adjust telescopic poles for desired height. (see step 4 of base set up)

Slip in weighted roller.



6.

Connect power and turn it on.

Specs

- Max Height: 76.75"
- Min Height: 47.25"
- Width: 32"
- Foot print: 19.75" x 12.5"
- Max Graphic: 28.75" x 145"
- Shipping size: 44" x 13" x 5"
- Shipping weight: 15 lbs.