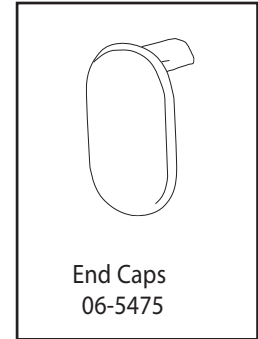
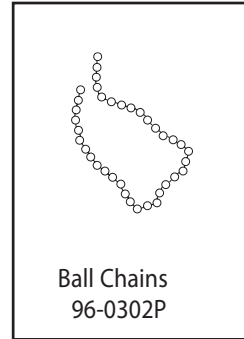
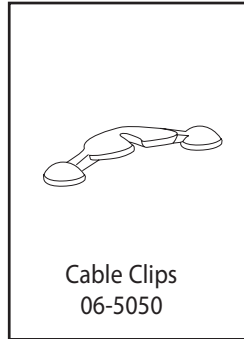
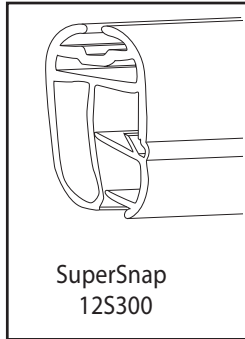


SuperSnap

Instruction Sheet

Parts



Instructions for assembly

Step 1

Snap the SuperSnap open and insert poster (top and bottom). Fig. 1

Note: It is easier to open and close the SuperSnap by starting at one end and working your way down the holder.

To close, snap the SuperSnap shut.

Fig. 2

Step 2

Insert single ball of ball chain into inner channel of Cable Clip. The cable should snap into place. Fig. 3

Step 3

Align one round end of cable clip with top channel of the rail and insert. Once in place, insert end of ball chain into channel. Then press down on the other round end of the cable clip and slide into rail by pushing on the clip. Fig. 4 Repeat steps 2 & 3 for second cable clip.

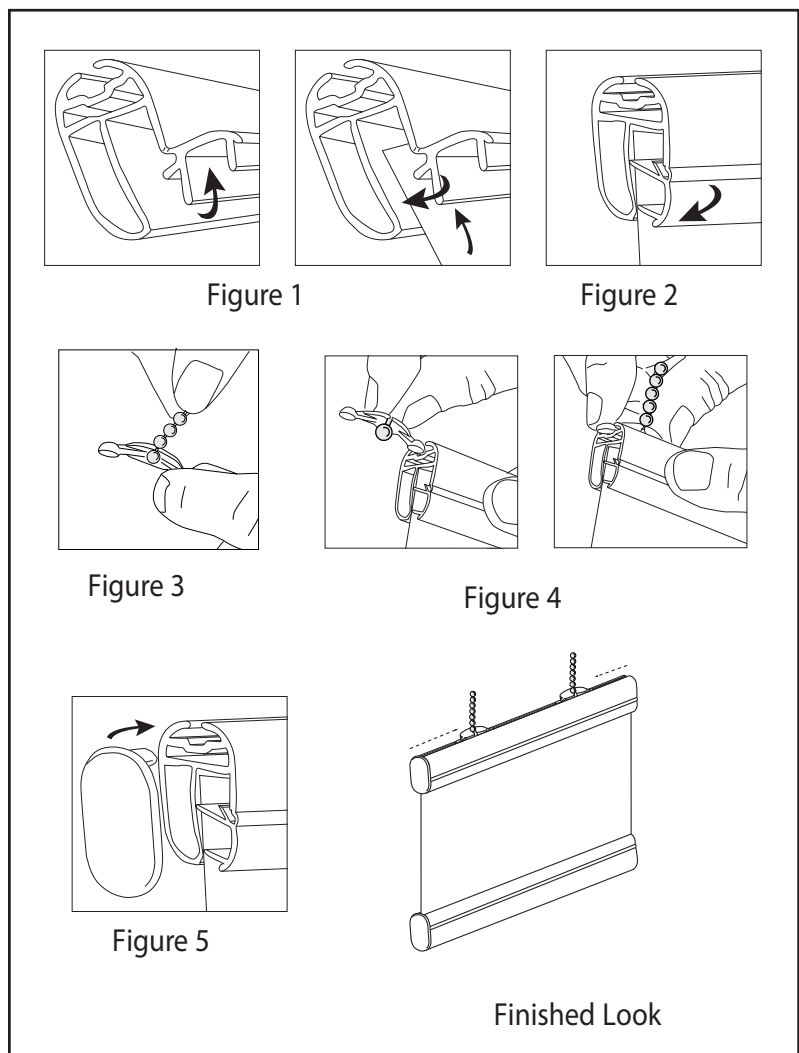
Note: Be sure to push on the cable clip in order to slide the ball chain into place. Do not pull on, or push against, the ball chain as this will cause it to bind in the channel.

Step 4

Push end caps into place. Fig 5
Suspend poster

Important note:

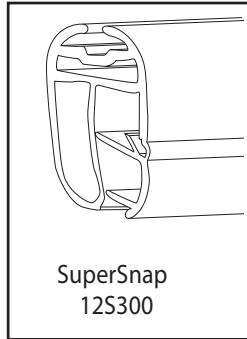
Please save and reuse the SuperSnap, End Caps and Cable Clips for future projects.



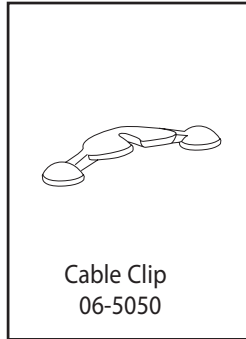
SuperSnap

Instruction Sheet

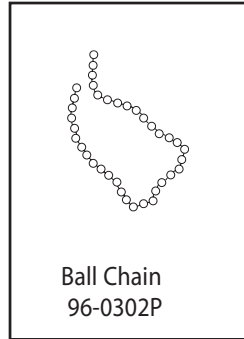
Parts



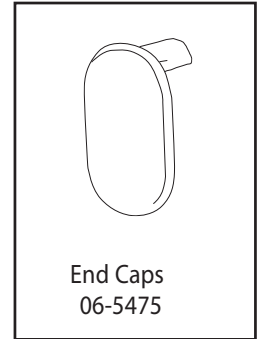
SuperSnap
12S300



Cable Clip
06-5050



Ball Chain
96-0302P



End Caps
06-5475

Instructions for assembly

Step 1

Snap the SuperSnap open and insert poster (top and bottom). Fig. 1

Note: It is easier to open and close the SuperSnap by starting at one end and working your way down the holder.

To close, snap the SuperSnap shut.

Fig. 2

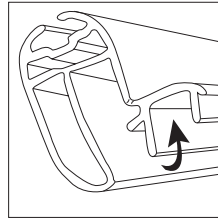


Figure 1

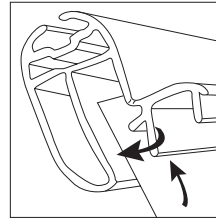


Figure 2

Step 2

Insert single ball of ball chain into inner channel of Cable Clip. The cable should snap into place. Fig. 3

Step 3

Align one round end of cable clip with top channel of the rail and insert. Once in place, insert end of ball chain into channel. Then press down on the other round end of the cable clip and slide into rail by pushing on the clip. Fig. 4

Note: Be sure to push on the cable clip in order to slide the ball chain into place. Do not pull on, or push against, the ball chain as this will cause it to bind in the channel.

Step 4

Push end caps into place. Fig 5

Suspend poster. Finished Look

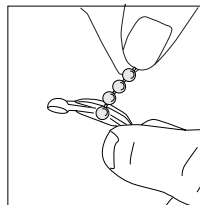


Figure 3

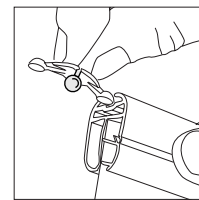


Figure 4

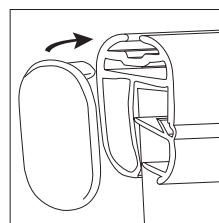
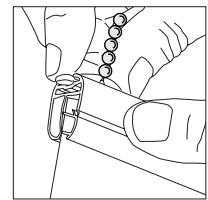
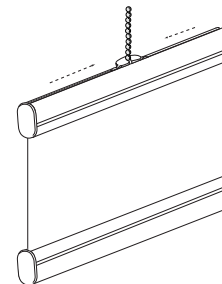


Figure 5



Finished Look

Important note:

Please save and reuse the SuperSnap, End Caps and Cable Clips for future projects.